

Product Specification

DMT Test Dust Type 8® | 7.2.2.3

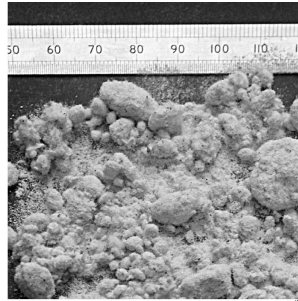
TÜV NORD Systems GmbH & Co. KG

Plant & Product Safety

Refrigeration & Air Quality

Am TÜV 1

45307 Essen, Germany



1. General description:

DMT Type 8® test dust is used as simulated house dust in accordance with IEC 62885 (2016) / IEC 60312 (2010) / DIN EN 60312 (2014) Chapter 7.2.2.3. This simulated household dust is used according to chapter 5.9 (IEC 62885-2) to determine the change in suction pressure of filled dust containers.

DMT GmbH & Co. also offers modifications of DMT Test Dust Type 8®. An example of this is the DMT test dust Type 8® < 100 µm. The individual components of DMT Type 8 test dust can also be ordered individually.

2. Composition:

3. Transport and Storage:

4. Quality ensurance:

5. Specification:**Name :** DMT Simulated Household Dust | 7.2.2.3**Synonyme :** DMT household dust, synthetic household dust DMT 8, 5.1.2.3**Standard:** IEC 60312 (2008), IEC 62885-2 (2018), DIN EN 60312-1 (2017)**Title of Standard:** Surface cleaning appliances - Part 2: Dry vacuum cleaners for household or similar use / Vacuum cleaners for household use. Dry vacuum cleaners. Methods for measuring the performance**Composition :** 70% DMT test dust type 3 20 % Cellulose dust 10% Cut cotton**Material:** Particle-Fiber-Mixture**largest particle size (μm) :** 4000**Bulk density (g/cm^3):** 0,45**Substance density (g/cm^3) :** -**Apperance :** solid**Hardness (Mohs):** 3,5**Colour :** white