

Product Specification

DMT ASHRAE Test Dust 52.1 & 52.2

TÜV NORD Systems GmbH & Co.

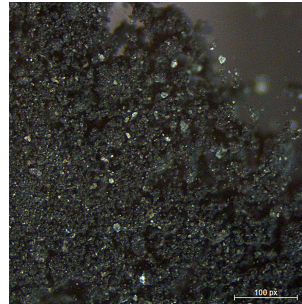
KG

Plant & Product Safety

Refrigeration & Air Quality

Am TÜV 1

45307 Essen, Germany



1. General description:	The DMT ASHRAE test dust is described in the ANSI / ASHRAE standard. This is used, for example, for filter testing in accordance with EN 779.
2. Composition:	The DMT ASHRAE test dust consists of 72 % test dust A2, 23 % soot and 5 % cut cotton.
3. Transport and Storage:	Partial segregation may occur during transport and storage. It is therefore recommended to homogenize the DMT ASHRAE Test Dust 52.1 & 52.2 before use, which can be achieved by mixing with a laboratory tumbler mixer. Please store in a dry and airtight original container.
4. Quality ensurance:	<p>In order to achieve reproducible quality, the raw materials and production are strictly controlled. The following quality controls are carried out:</p> <p>Monitoring the particle size distribution of raw materials</p> <p>Monitoring the particle size distribution of the end product</p>

**5. Specification:****Name :** DMT ASHRAE Test Dust 52.1 & 52.2**Standard:** DIN EN 779 / ANSI ASHRAE**Title of Standard:** Particulate air filters for general ventilation - Determination of the filtration performance**Composition :** 72 % A2 fine 23 % Black carbon 5 % Cut Cotton**Material:** Particle-Fiber-Mixture**largest particle size (μm) :** 100**Apperance :** solid**Hardness (Mohs):** -**Colour :** black/grey