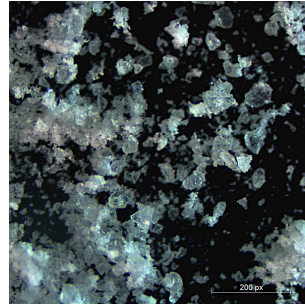


## Product Specification

### DMT Test Dust A4 coarse

TÜV NORD Systems GmbH &  
Co. KG  
Plant & Product Safety  
Refrigeration & Air Quality

Am TÜV 1  
45307 Essen, Germany



**1. General description:** The coarsest test dust of ISO 12103-1 is the Arizona test dust A4 coarse.

The so-called Arizona test dust A4 coarse consists of 69 % - 77 % quartz. DMT test dust A4 coarse "epsd" complies with the particle size distribution specified in the ISO 12103-1 standard, but 98 % of this consists of quartz. The test dust is identified by an additional code "epsd". "epsd" stands for "equivalent particle size distribution".

---

**2. Composition:**

The specified particle size distribution is shown in the following table:

<b>x (µm)</b>	<b>Q3(x) (%)</b>
0.97	0.74 - 0.83
1.38	1.8 - 2.1
2.75	5.5 - 6.3
5.50	11.5 - 12.5
11.0	21.0 - 23.0
22.0	36.0 - 38.5
44.0	58.0 - 60.0
88.0	85.0 - 86.5
124.50	93.0 - 94.0
176.0	97.2 - 98.2
248.90	99.0 - 100.0
352.0	100

---

**3. Transport and Storage:**

Partial segregation may occur during transport and storage. It is therefore recommended to homogenize the DMT Test Dust A4 coarse before use, which can be achieved by mixing with a laboratory tumbler mixer. Please store in a dry and airtight original container.

---

**4. Quality ensurance:**

In order to achieve reproducible quality, the raw materials and production are strictly controlled. The following quality controls are carried out:

Monitoring the particle size distribution of raw materials

Monitoring the particle size distribution of the end product

---



---

**5. Specification:**

**Name :** DMT Test Dust A4 coarse

**Synonyme :** AC coarse, coarse test dust

**Standard:** ISO 12103-1

**Title of Standard:** Road vehicles -- Test contaminants for filter evaluation -- Part 1:  
Arizona test dust

**Composition :** Quarz

**Material:** Quartz

**largest particle size ( $\mu\text{m}$ ) :** 352

**Bulk density ( $\text{g}/\text{cm}^3$ ):** 1,20

**Substance density ( $\text{g}/\text{cm}^3$ ) :** 2,65

**Apperance :** solid

**Hardness (Mohs):** 7,0

**Colour :** white

---