

## Product Specification

### DMT Mineral Dust Type 1 | 7.2.2.1

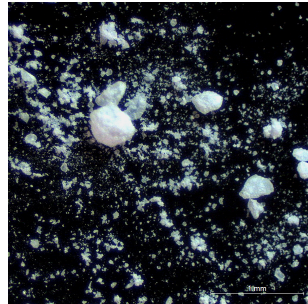
TÜV NORD Systems GmbH & Co. KG

Plant & Product Safety

Refrigeration & Air Quality

Am TÜV 1

45307 Essen, Germany



#### 1. General description:

DMT Dolomit mineral dust, also known as hard floor dust or crevice dust, meets the specifications of the IEC 62885-2 / IEC 60312 / DIN EN 60312-1 Chap. 7.2.2.1. In addition to the fine fraction, DMT Dolomite mineral dust also contains coarse particles up to 2 mm in size.

This composition is similar to the dust & sand found in reality on hard floors such as laminate, parquet or tiled floors. The corresponding standard test is described in Chapter 5, IEC 62885-2. This test dust is used to determine or evaluate the dust absorption of a vacuum cleaner on hard floors.

#### 2. Composition:

#### 3. Transport and Storage:

#### 4. Quality ensurance:

**5. Specification:****Name** : DMT Mineral Dust Type 1 | 7.2.2.1**Synonyme** : DMT Dolomite Sand, Hard floor dust, Crevice Test Dust, DMT Type 1, 5.1.2.1**Standard**: IEC 60312 (2008), IEC 62885-2 (2018), DIN EN 60312-1 (2017)**Title of Standard**: Surface cleaning appliances - Part 2: Dry vacuum cleaners for household or similar use / Vacuum cleaners for household use. Dry vacuum cleaners. Methods for measuring the performance**Composition** : Calcium magnesium carbonate**Material**: Dolomite**largest particle size ( $\mu\text{m}$ )** : 2000**Bulk density ( $\text{g}/\text{cm}^3$ )**: 1,10**Substance density ( $\text{g}/\text{cm}^3$ )** : 2,85**Apperance** : solid**Hardness (Mohs)**: 3,5**Colour** : white